

LEAD REFRACTORY GUNNING MACHINE

Powerful, Compact and Reliable

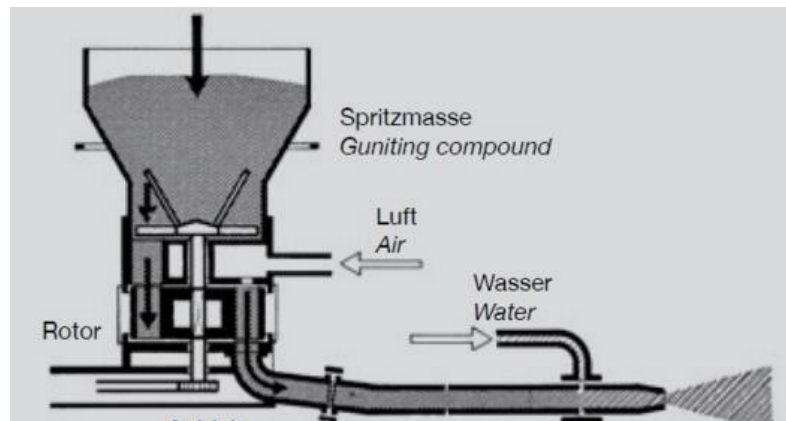
1. Description

LZ-5ER is a big size and specifically designed for Refractory Dry-mix shotcrete applications, as well as for concrete shotcrete application.

With this LZ-5ER, you can get low dust and high performance spraying flow in nozzle.

2. Features

LZ-5ER is straight chamber rotor type refractory gunning machine.



◆ Variable Output with variable-frequency drive



ABB variable-frequency drive/ABB 变频调速



◆ High Hopper with Vibrator/高料斗



High Hopper with Vibrator



◆ Collect Dust Bag/收尘袋



Collect Dust Bag/收尘袋

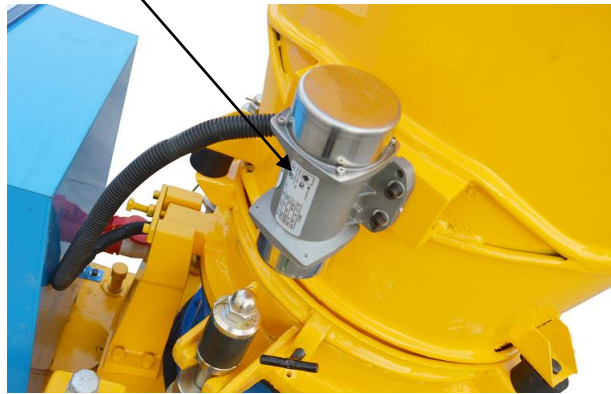
◆ Clean Dust Gun/手持吹尘器



Clean Dust Gun/手持式吹尘器

◆ Electric Vibrator /振动电机

Electric Vibrator /振动电机



◆ Protect Frame/电器元件保护架

Protect Frame/电器元件保护架

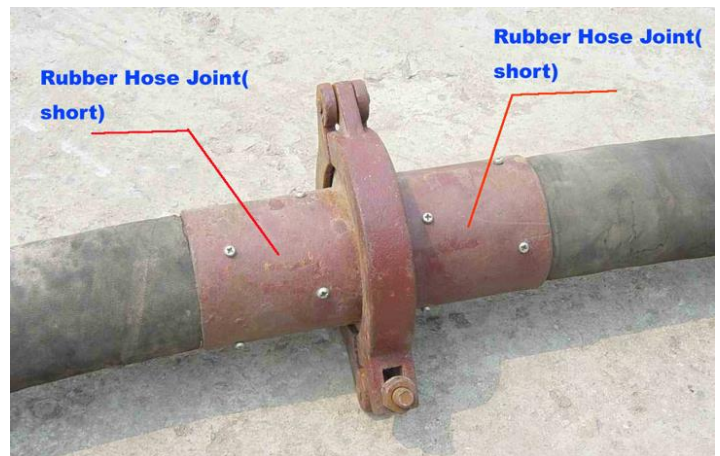


◆ Heavy-duty Solid Wheels/实心轮

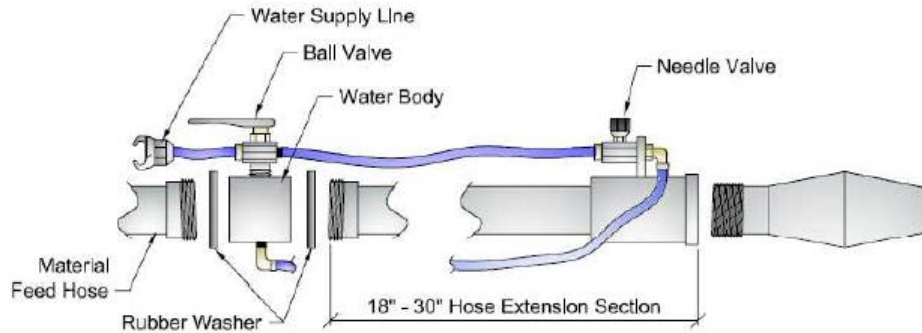


实心轮/Heavy-duty Solid Wheels

◆ Coupling and clamp/快换接头、卡子
The Coupling and Clamp are optional as below
两种接头、卡子可选



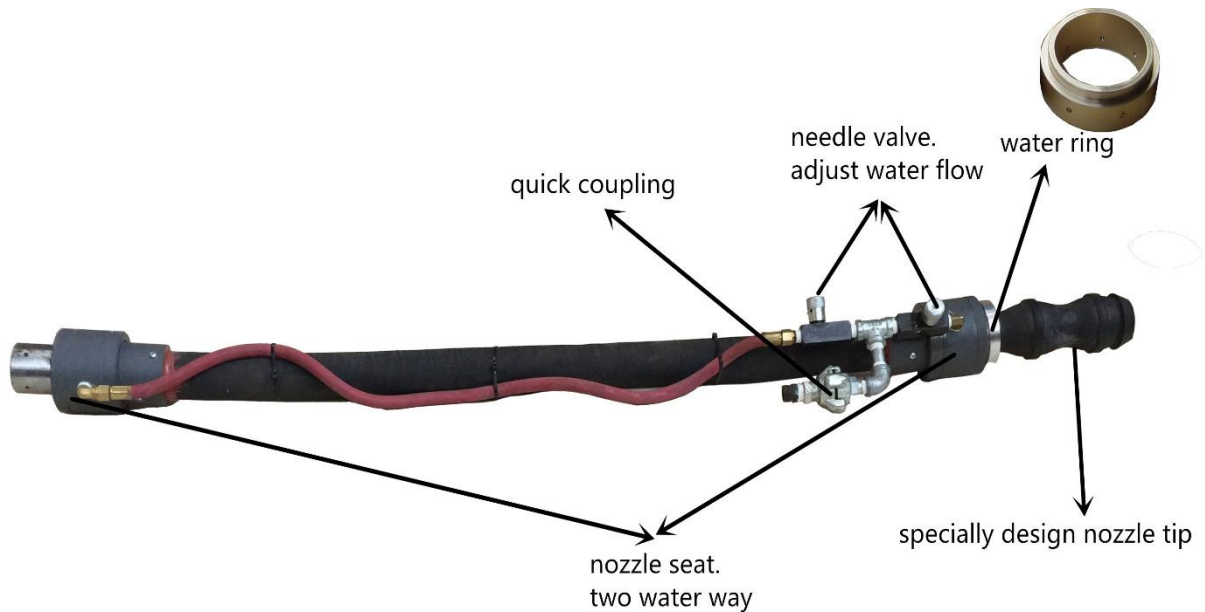
◆ Light weight Nozzle/专用喷头



New!!! Pre-dampening Nozzle!

新品!!! 预湿喷头!

1. Low rebound, low dust. 低反弹, 少粉尘。
2. Reduce additive water amount. 减少加水量。
3. Improve refractory compactness and strength. 提高耐火材料的实密度和强度。



Refractory Gunning Machine spraying effect.

耐火材料喷浆机喷射效果



★ Machine color can be customized as yellow or blue for customers.

地址 ADD: 郑州市中原区西流湖街道办事处铁炉村西四环东
Xisihuan Ring-Road East, Tielu, Xiliu lake sub-district,
Zhongyuan District, Zhengzhou, Henan

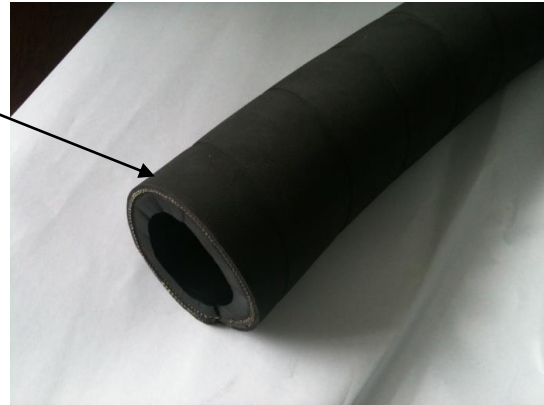
邮编 P.C.:450042

网址 (Web): www.leadcrete.com E-Mail: sales@leadcrete.com

电话 TEL.:+86-371-63902781 传真 FAX:+86-371-63526676

◆ Blast Rubber Hose/耐磨喷砂管

Premium Grade Blast hose/耐磨喷砂管



◆ High pressure water pump, 30bar pressure make sure to add water fully atomize, mix evenly.

高压水泵，30bar 水压保障加入水充分雾化，混合均匀



地址 ADD: 郑州市中原区西流湖街道办事处铁炉村西四环东
Xisihuan Ring-Road East, Tielu, Xiliu lake sub-district,
Zhongyuan District, Zhengzhou, Henan

邮编 P.C.:450042

网址 (Web): www.leadcrete.com E-Mail: sales@leadcrete.com

电话 TEL.:+86-371-63902781 传真 FAX:+86-371-63526676

3. Technology Sheet/技术参数

Specification (with Electric motor drive):	
Rated Output/额定出料量	1-5m ³ /h(2-10ton/h)
Max. Horizontal Conveying Distance/最大水平 输送距离	200m
Max. Aggregate Size/最大骨料粒径	Φ15mm
Conveying Hose Inner Diameter/输送管内径	51mm
Operating air Pressure/工作风压	0.2-0.4MPa(29-58PSI)
Air Consumption/耗气量	8~9m ³ /min(285-325CFM)
Motor Power/电机功率	5.5kW
Voltage/电压	3 phase,380V,50Hz
Material Charging Height/上料高度	1.1m
Rotor Speed/转子转速	0-13.2r/min
Overall Dimension(LxWxH) /外形尺寸	1.32x0.75x1.2m
Weight/重量	720kg

4. Machine Pictures Gallery/机器照片



地址 ADD: 郑州市中原区西流湖街道办事处铁炉村西四环东

邮编 P.C.:450042

Xisihuan Ring-Road East, Tielu, Xiliu lake sub-district,
Zhongyuan District, Zhengzhou, Henan

网址 (Web): www.leadcrete.com E-Mail: sales@leadcrete.com

电话 TEL.: +86-371-63902781 传真 FAX: +86-371-63526676

优酷视频:

http://v.youku.com/v_show/id_XNzQ0MzczODI4.html?firsttime=0&from=y1.4-2&q-pf-to=pcqq.c2c

Youtube Video:

<https://www.youtube.com/watch?v=CbQxBT-JNh4>

http://v.youku.com/v_show/id_XNjlyNjE5NzQ4.html

