

LMP-5X Screw pump plastering machine with mixer

Description

The modular system of LMP-5X Screw pump plastering machine with mixer is suitable for users who pump and spray pump-able wet mortars with grain sizes of up to 6mm. Their versatility and reliability are inspiring users in all sectors throughout the world.



Technical data sheet

Item	Technical data
Mixer volume	100L
Agitator volume	100L
Pump type	Screw pump
Output	7-40L/min
Pressure	25Bar
Outlet hose	1.5''
Acceptable max. aggregate size	6mm
Voltage	400v, 50HZ
Power	5.5kw+2.2kw

Special features

- Innovative shield design
- Geared motor with safety lock (no unintentional speed change)
- Compressor support plate
- The machine comes complete with a mortar hose, air hose, spray gun, nozzle and remote control
- Wear parts and accessories exchangeable with the Putzmeister S5 series!

Application

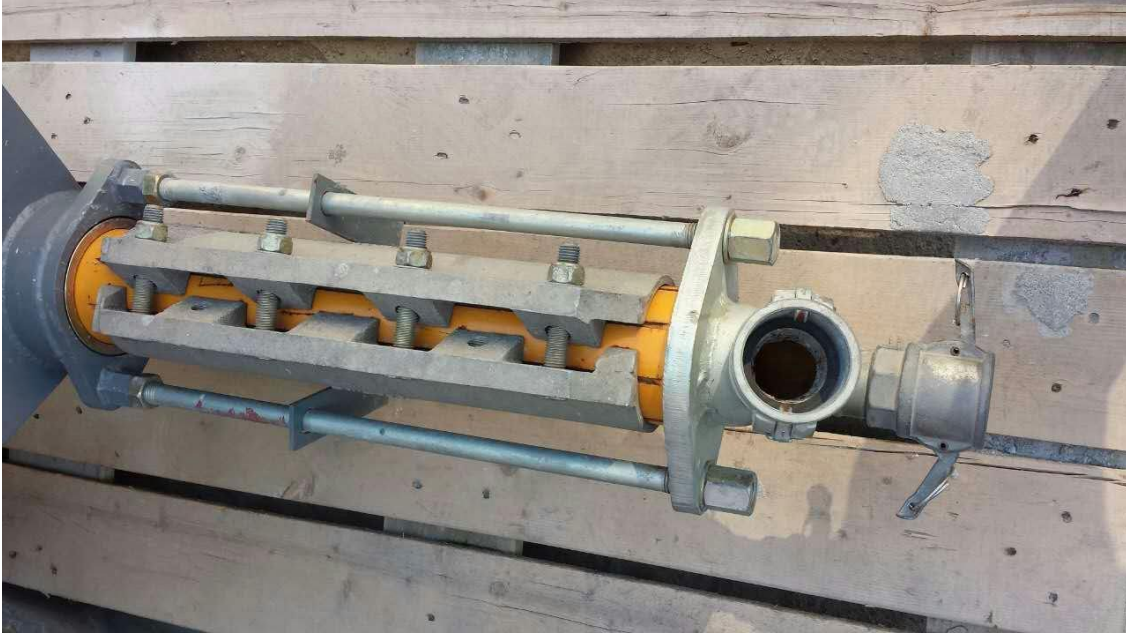
Suitable for a big variety of mortars such as:

- Base coat
- Fire proofing mortars
- Lime cement mixed mortars
- Self leveling mortars
- Insulation coatings
- Grouting materials
- Texture coatings
- Concrete repair mortars
- Masonry mortar
- Anchoring mortar

Photos in difference angles







Zhengzhou Lead Equipment Co., Ltd.

Add: Xisihuan Ring-Road East, Tielu, Xiliu lake sub-district,
Zhongyuan District, Zhengzhou, Henan

Web: www.leadcrete.com , www.leadcrete.net

E-Mail: sales@leadcrete.com