

MAT200/300/60 Grouting Equipment station

Feature:

1. It is combination of mixer, agitator and hydraulic grout pump in one base frame.
2. Siemens electric motor(WEG electric motor is optional)
3. Schneider component for electric control box.
4. Yuken reversing valve for hydraulic system of grout pump
5. Butterfly valve of mixer and agitator.
6. Linked switch between mixer and agitator.
7. Oil temperature gauge can automatically control cooler fan working in normal temperature range, if temperature is too high, the machine will stop work automatically.

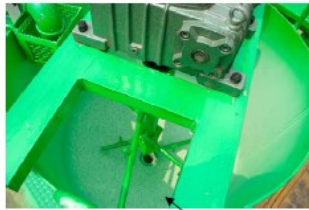
Technical data:

Description	Data
Grout Station type	MAT200/300/60
Mixer Volume	200L
Mixer production(w/c ratio=1)	4 m ³ /h
Circulation capacity	1100l/min
Suitable W/C Ratio	0.5 to 1
Mixer electric motor power	7.5kw, 1450rpm
Agitator Volume	300L
Agitator Speed	36rpm
Agitator electric motor power	1.5kw, 1450rpm
Water tank	60L
Grout Pump Type	LGH90
Grout pump output(Max.)	100L/min
Grout pump work pressure	10MPa
Grout pump electric motor power	11kw, 1450rpm
Grout Station Overall dimension	2400x2300x1620mm
Grout Station Weight	1320kgs

Certificate:

CE AND ISO9001-2008





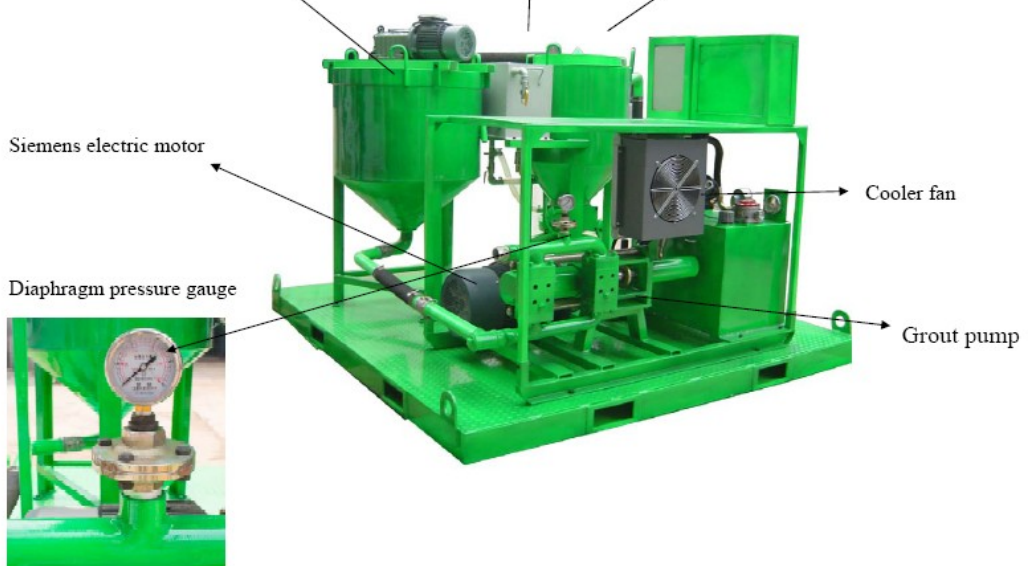
300L Agitator



60L Water tank



200L Mixer



Siemens electric motor

Diaphragm pressure gauge

Cooler fan

Grout pump

