

LZ-3ER/S REFRACTORY GUNNING MACHINE

Powerful, Compact and Reliable

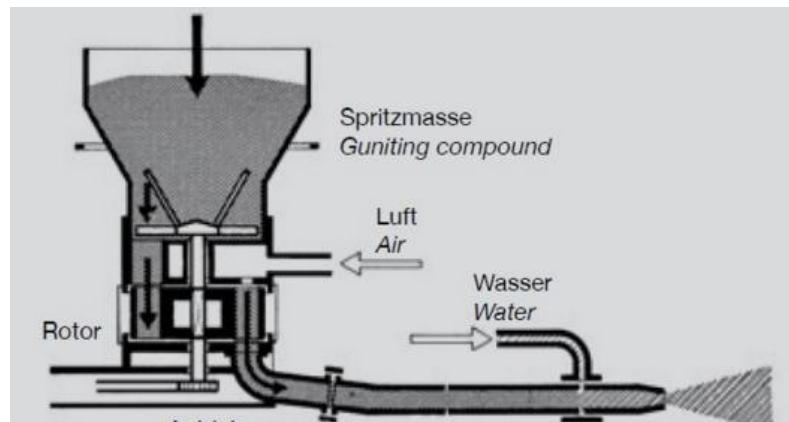
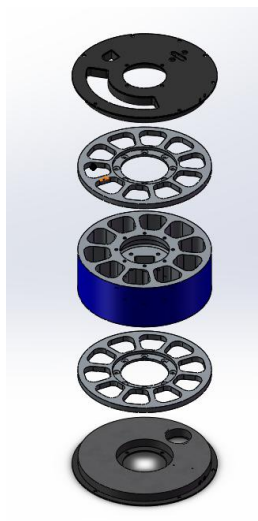
1. Description

LZ-3ER/S is specifically designed for Refractory Dry-mix shotcrete applications, as well as for concrete shotcrete application.

With this LZ-3ER/S, you can get low dust and high performance spraying flow in nozzle. Compared with our market popular LZ-3ER, This LZ-3ER/S is a new version.

2. Features

LZ-3ER/S is straight chamber rotor type refractory gunning machine.



◆ Variable Output with variable-frequency drive



ABB variable-frequency drive (VFD)



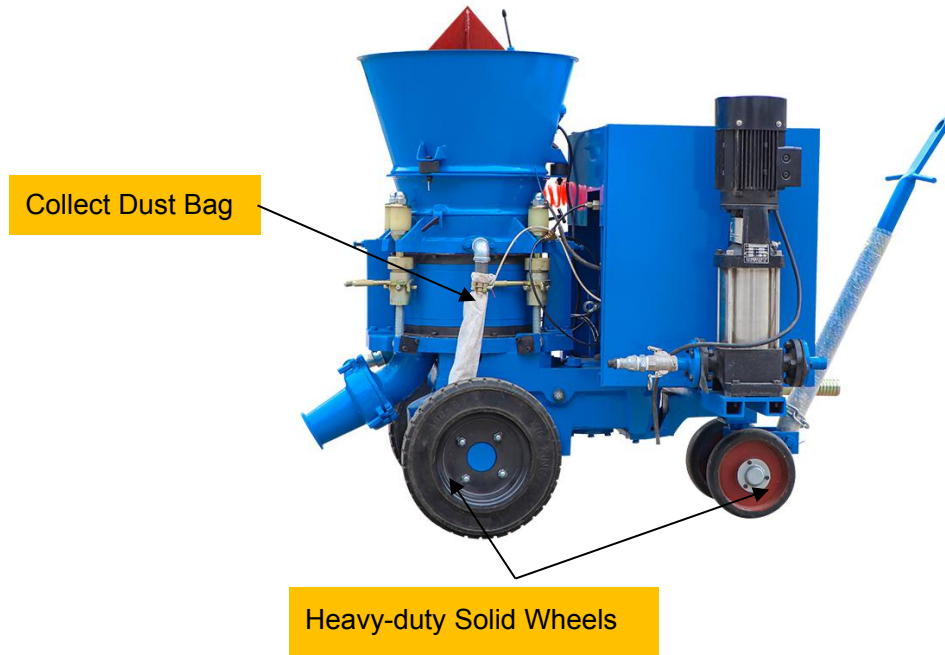
- ◆ Bag Cutter and High Hopper with Vibrator
- ◆ Clean Dust Gun
- ◆ Electric Vibrator

Clean Dust Gun

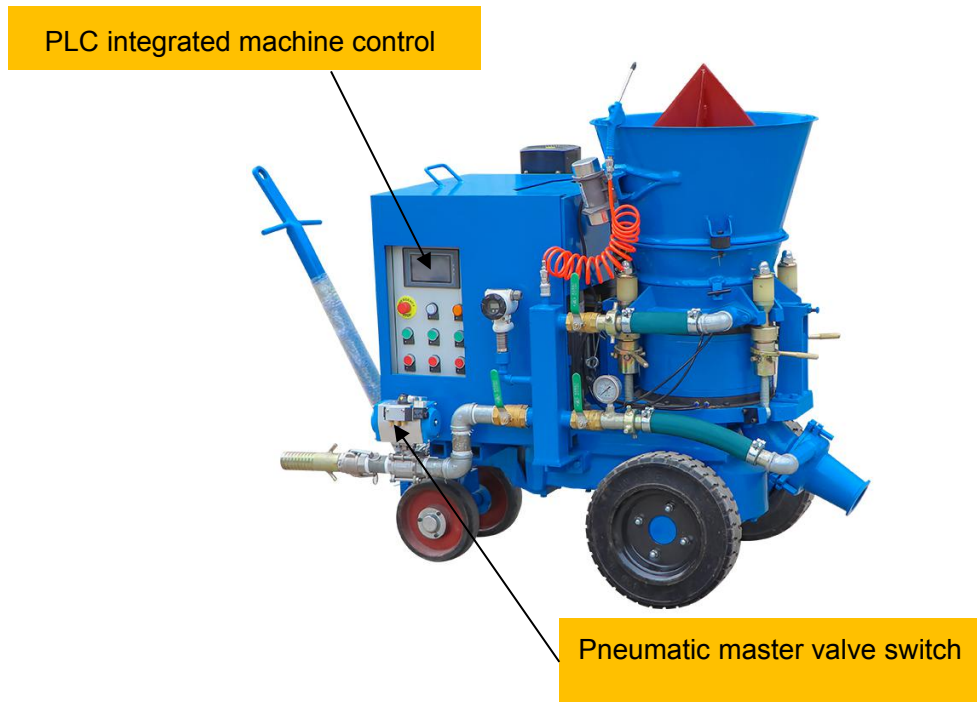
Electric Vibrator



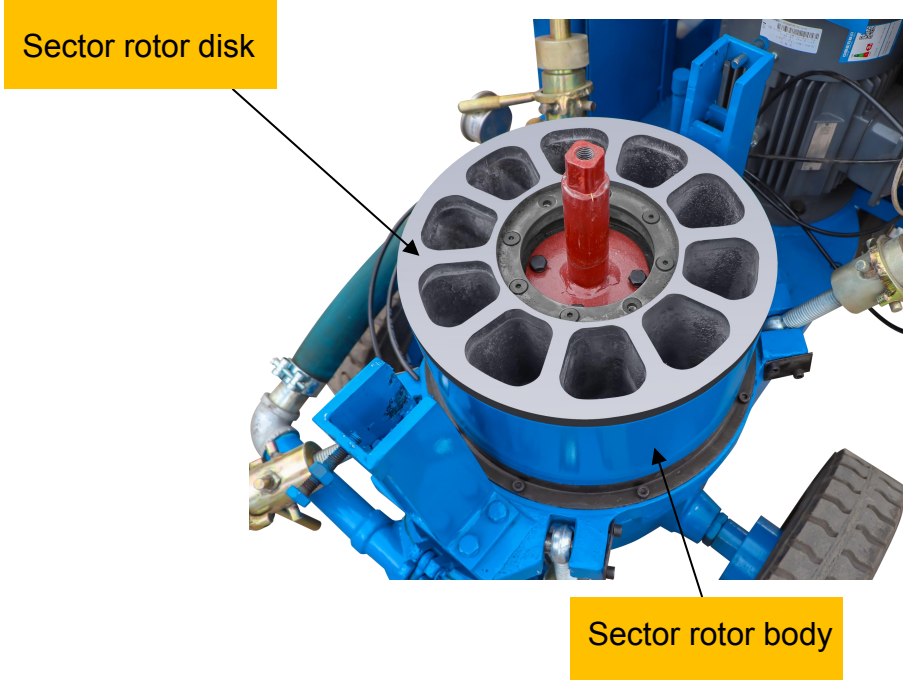
- ◆ Collect Dust Bag
- ◆ Heavy-duty Solid Wheels



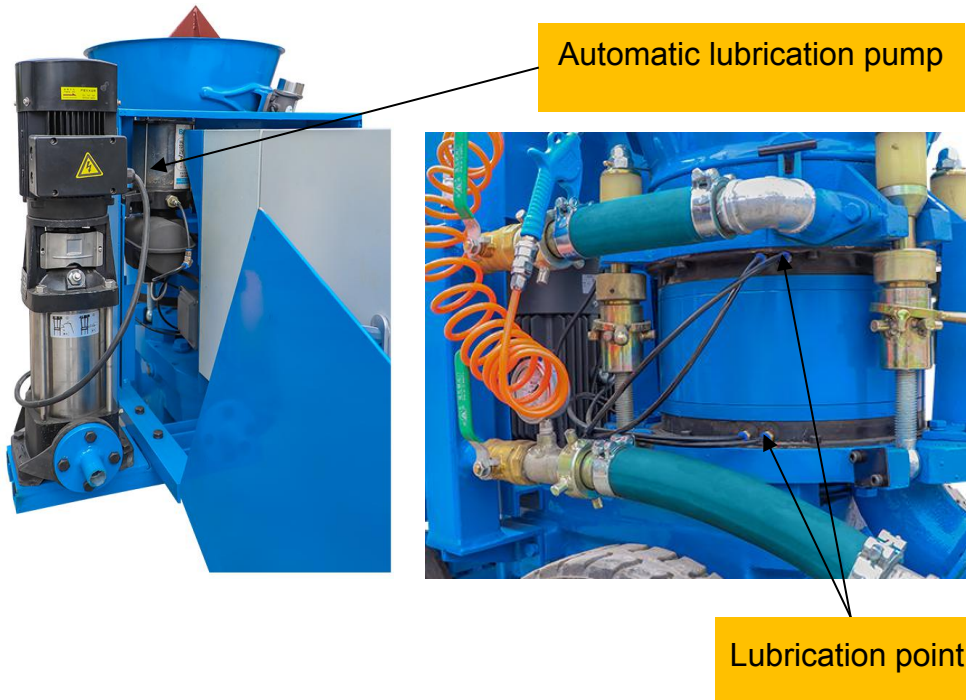
- ◆ PLC integrated machine control
- ◆ Electric control cabinet cover
- ◆ Pneumatic master valve switch



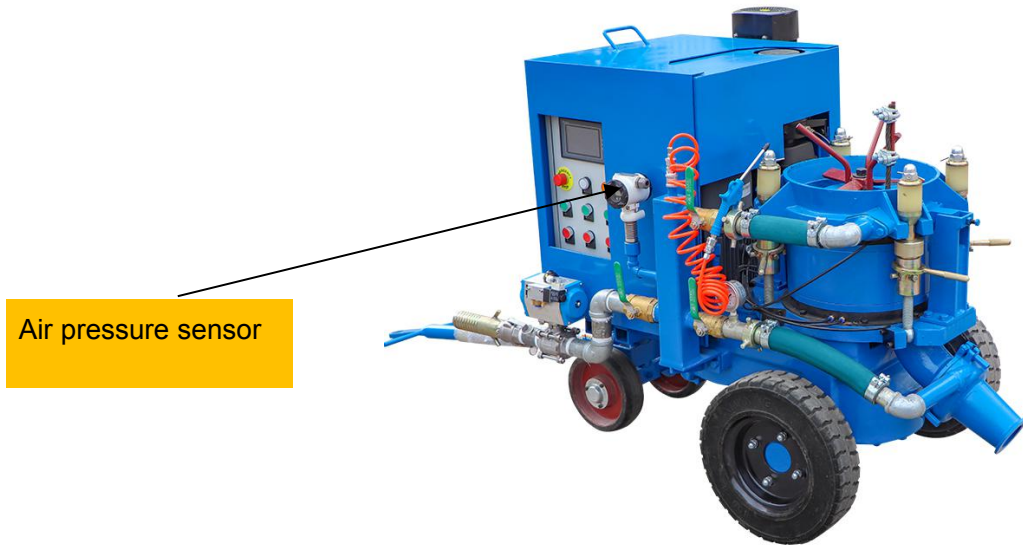
- ◆ Sector rigid liner
- ◆ Sector rotor body



- ◆ Integrated water pump installation
- ◆ Automatic lubrication pump



◆ Intelligent anti-clogging pipe system



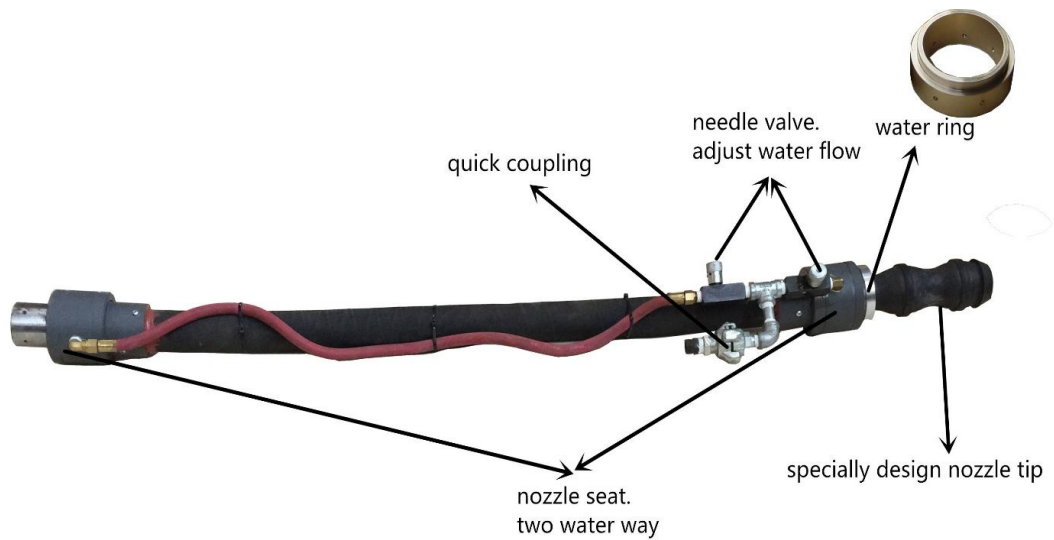
◆ Coupling and clamp
The Coupling and Clamp are optional as below



Light weight Nozzle

New!!! Pre-dampening Nozzle!

1. Low rebound, low dust.
2. Reduce additive water amount.
3. Improve refractory compactness and strength.



LZ-3ER/S refractory gunning machine spraying effect.



Blast Rubber Hose

Premium Grade Blast hose



High pressure water pump, 7bar pressure make sure to add water fully atomize, mix evenly.



3. Technology Sheet

Specification (with Electric motor drive):		
1, Automatically to clean delivery line blockage: PLC+VFD+Air Pressure Sensor.		
2, Sector hole to replace the circle hole in the rotor to improve the volume of the rotor and to decrease friction area, then with the same output, the rotor speed will be lower to improve the work life of rubber sealing plate and keep the motor power lower.		
3, The combination of gunning machine and high pressure water pump, it is easy to move.		
4, To add automatic lubricator to the rubber seal plate to make the work life of wear parts longer and make the motor power lower.		
Rotor Volume	6.3L	
Rotor Speed	4-8r/min	
Max. Output	1.5-3m ³ /h	
Max. Horizontal Conveying Distance	200m	
Max. Aggregate Size	Φ10 mm	
Conveying Hose Inner Diameter	38/ 32mm	
Operating Air Pressure	0.2-0.4MPa (29-58PSI)	
Air Consumption	6~7m ³ /min (215-250CFM)	
Material Charging Height	1.1m	
Rotor Motor	Power	4kW
	Voltage	3 phase,380V,50Hz
Water pump	Output: 26L/min; Pumping Head: 70m; Motor: 1.5kw	
Automatic lubrication	Volume	2L
	Power	24V, 50w
Overall Dimension(L×W×H)	1600×1000×1300mm	
Weight	665kg	

4. Machine Pictures Gallery





Zhengzhou Lead Equipment Co., Ltd.

Add: Xisihuan Ring-Road East, Tielu, Xiliu lake sub-district, Zhongyuan District, Zhengzhou, Henan

P.C.: 450042

Web: www.leadcrete.com

Email: sales@leadcrete.com

TEL.: +86-371-63902781, 55019537

FAX: +86-371-63526676