

# LGP220/350/50DPI-D Injection Grouting System



## Product Description

LGP220/350/50DPI-D injection grouting system is an updated machine, based on our existing grouting station, as well as, is a combination of mixer, agitator and grout pump in one base frame. It is mainly used to be made bentonite slurry, cement slurry, etc., in the application highway, railway, hydropower, construction, mining and other ground and underground construction.

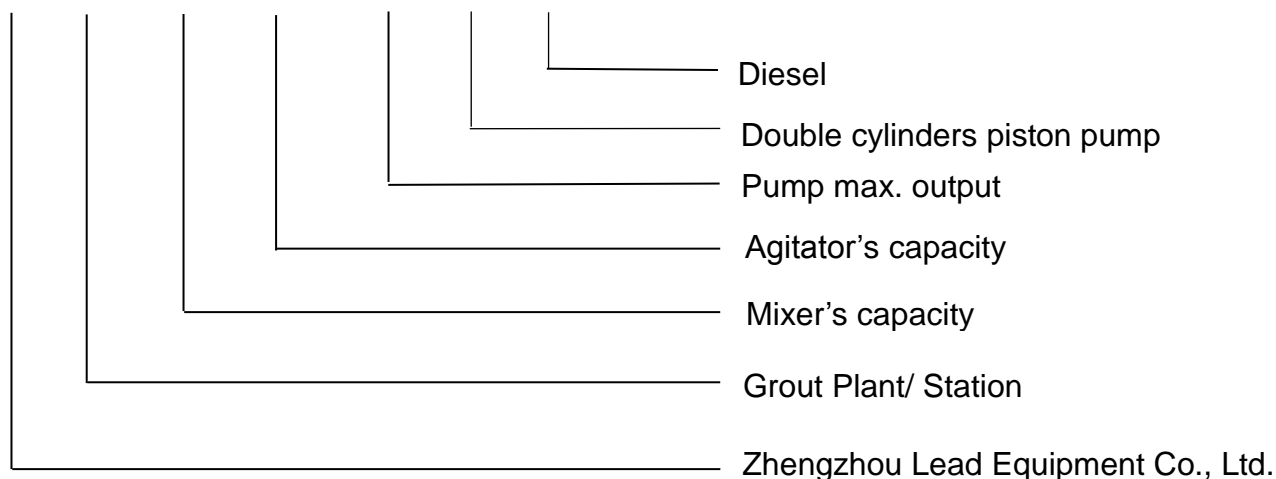
High-speed, high-shear colloidal mixer cause a vortex flow to ensures mix quickly and evenly. Water, cement or bentonite is quickly mixed into a homogeneous slurry. Then the mixed slurry was delivered to the agitator. Grout pump injects from the mixing drum (storage tank). This ensures a continuous mixing and grouting operations. The injection grouting system is hydraulic drive with electric motor. Grouting pressure and displacement is adjustable. Compact size and it is easy to operate. It also takes up a small space.

## Main Features

- ◆ Double cylinders piston pump with single acting to ensure the continuous slurry flowing (small pulse) and not easily leaking compared with the double acting piston pump.
- ◆ Grouting pressure and displacement is adjustable.
- ◆ The function switch between mixer and agitator is realized by using squeeze switch.
- ◆ With pressure, hydraulic oil temperature and flow sensors, over hydraulic oil temperature protection.
- ◆ Diesel and full hydraulic driven.
- ◆ PLC and HMI control.
- ◆ Solid state relay.
- ◆ Up to 5mm particle size.
- ◆ Air cooling and water cooling for the hydraulic.
- ◆ The grouting/ injection recorder with computer is optional.

## Model Definition

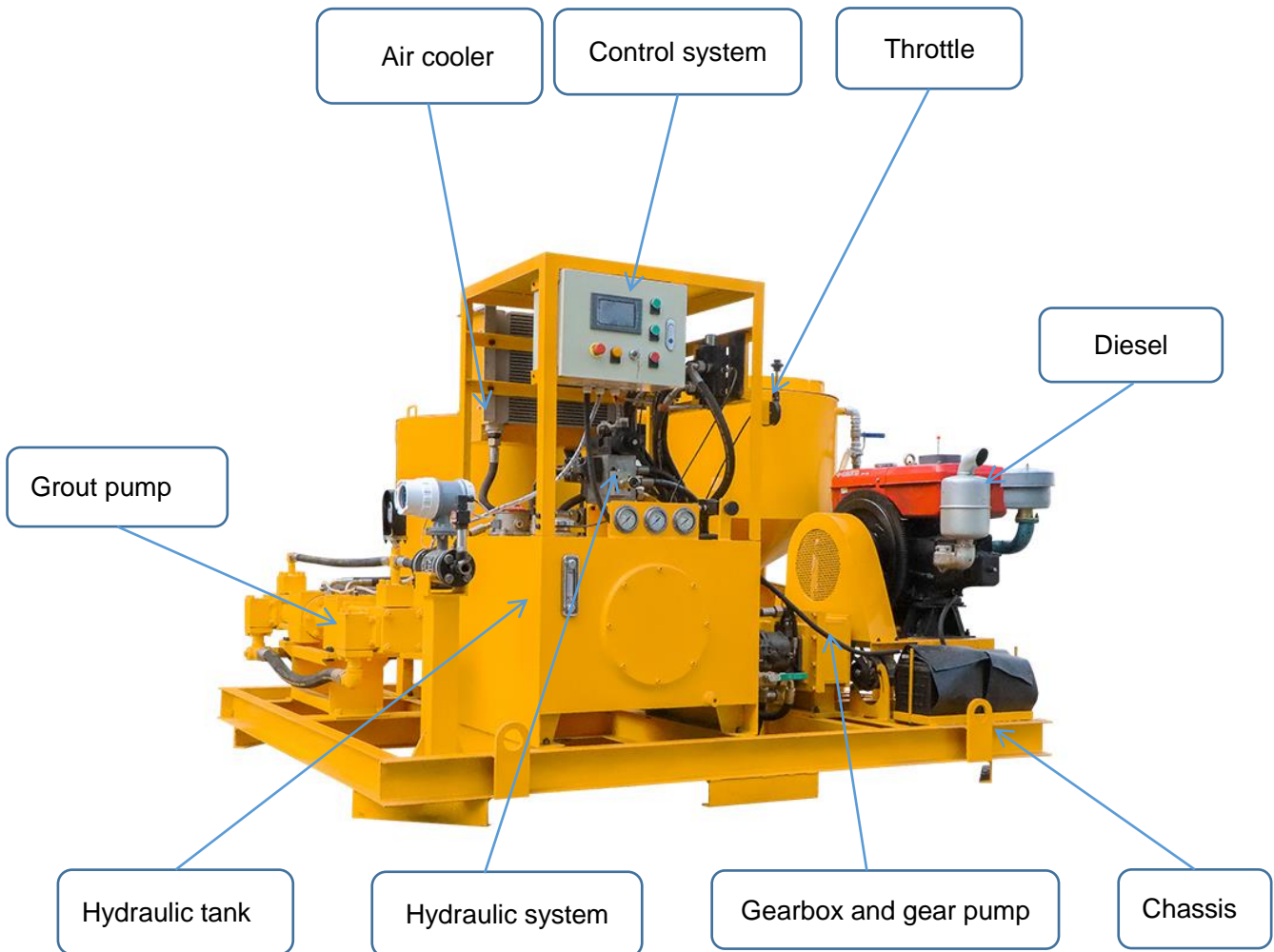
**L GP 220 / 350 / 50 DPI - D**

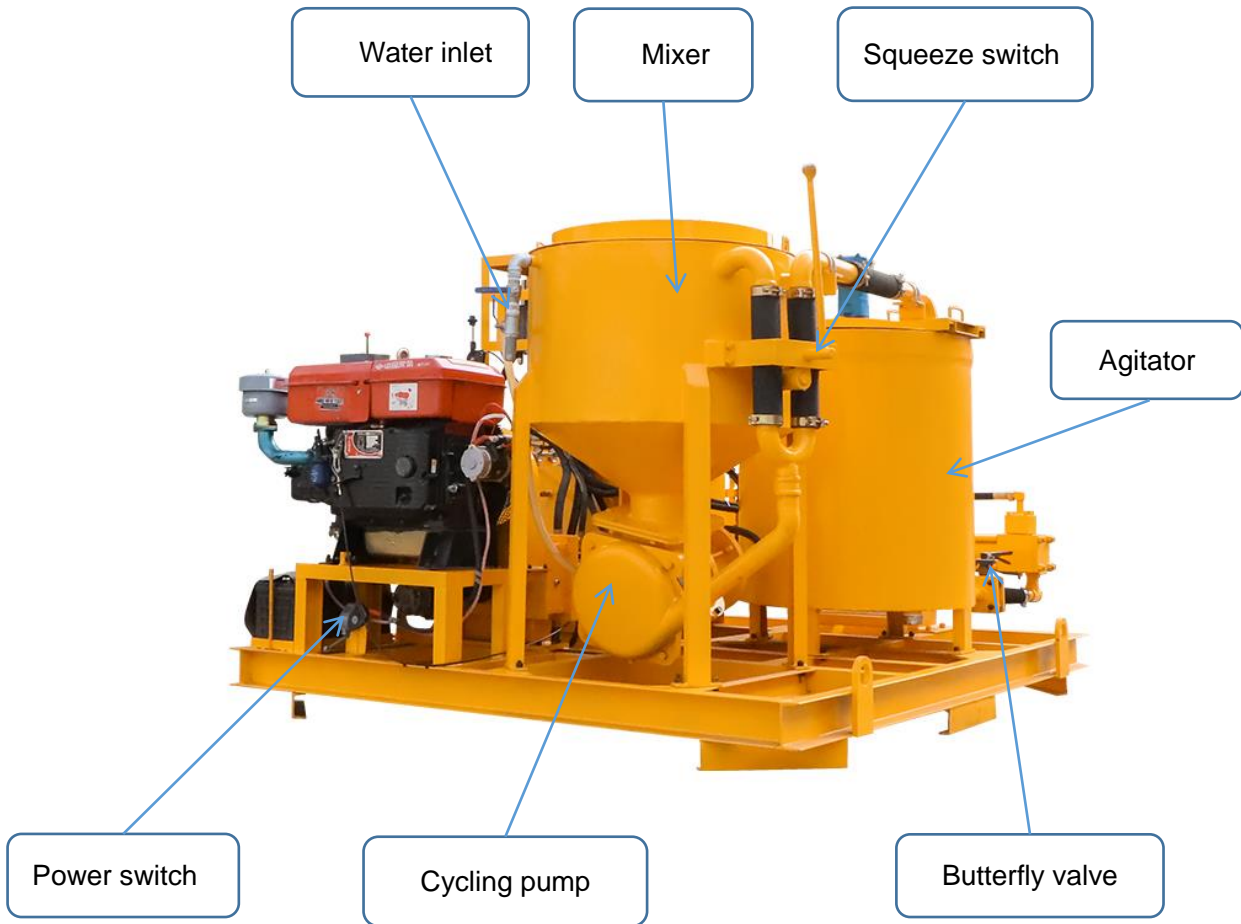


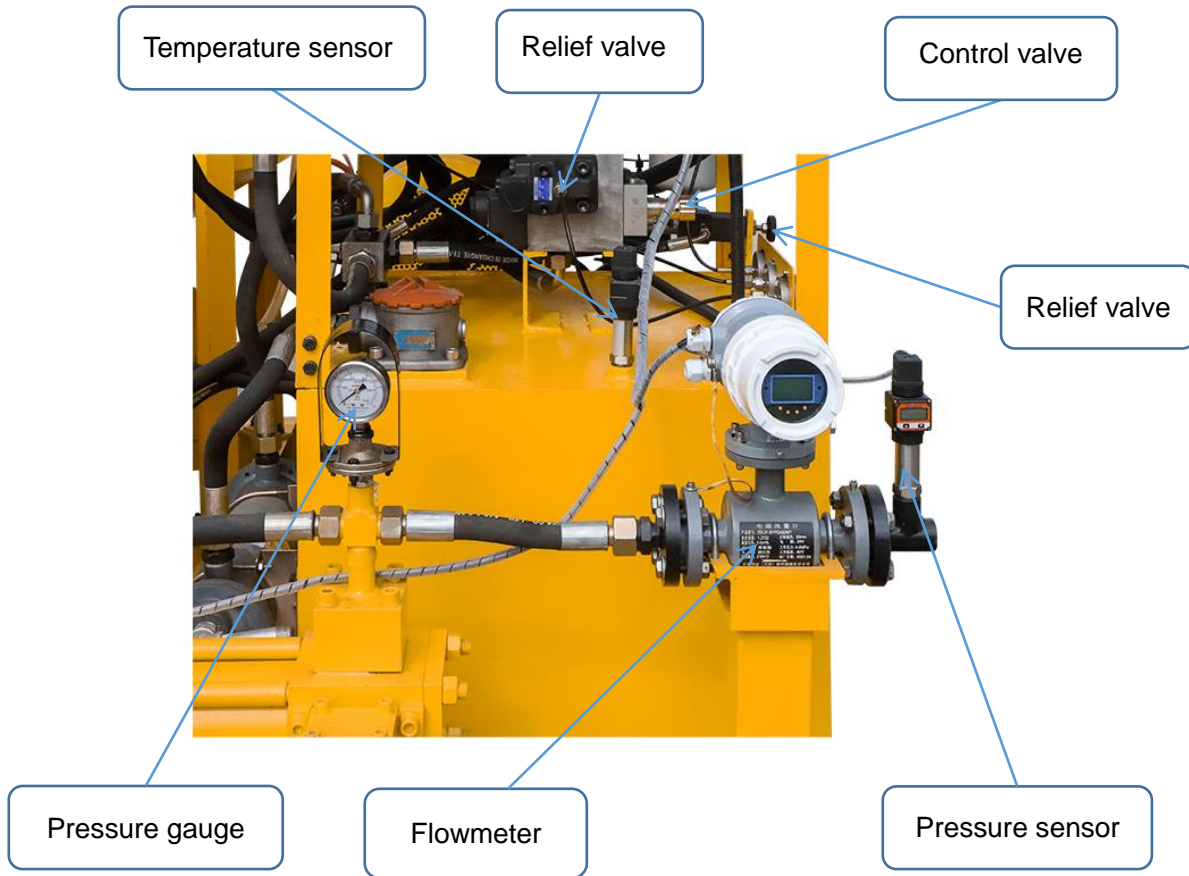
## Specification

Name		Data
Type		LGP220/350/50DPI-D injection grouting system
Mixer	Volume	220L
	Speed	1500rpm
Agitator	Volume	350L
	Speed	36rpm
Grouting pump	Pump pressure	0-30bar
	Pump output	0-50L/min
Dimension	Dimension	2400×2000×1620mm
	Weight	1550kg

## Main component



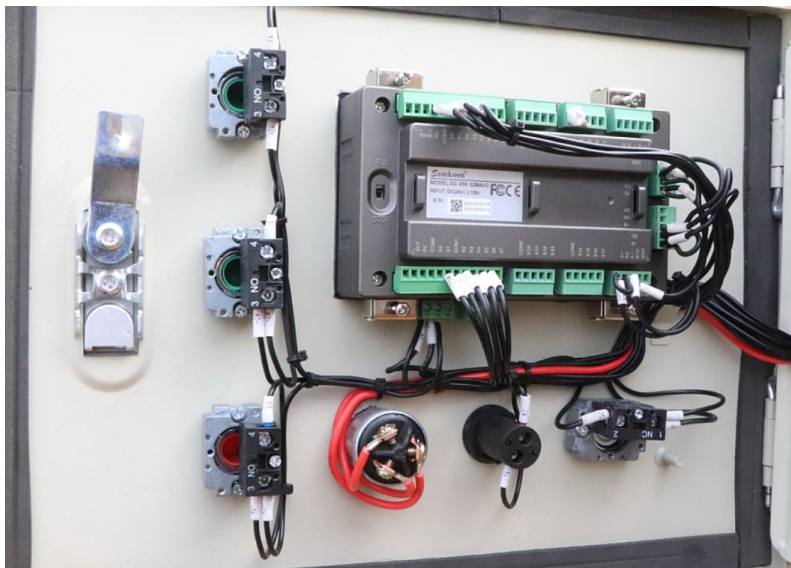




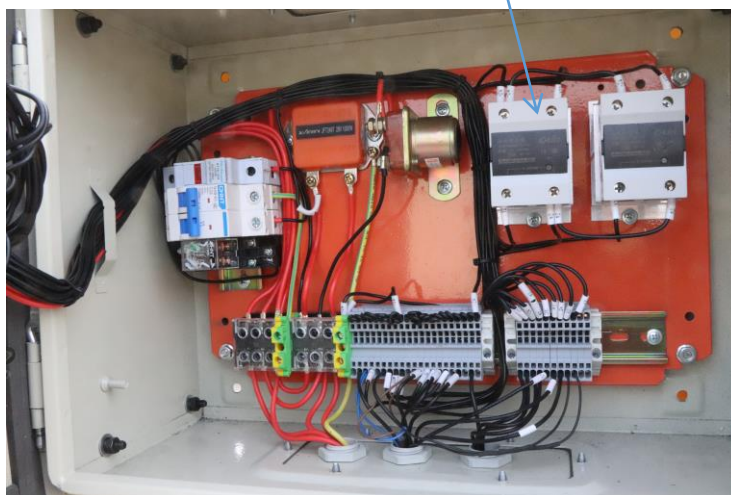




PLC and HMI (Human Machine Interaction) control



Solid state relay







## Zhengzhou Lead Equipment Co., Ltd.

Add: Xisihuan Ring-Road East, Tielu, Xiliu lake sub-district,  
Zhongyuan District, Zhengzhou, Henan

Web: <https://www.leadcrete.com> E-Mail: [sales@leadcrete.com](mailto:sales@leadcrete.com)

TEL.: +86-371-63902781 FAX: +86-371-63526676