

PB series hydroseeder

Spray seeding is more and more applied in road greening. The application of seeding spraying technology is in vegetation restoration and slope protection project.

PB series artificial soil spraying machine involves in planting permanent vegetation, spraying slurry, slope protection, grassing and erosion prevention.

Soil spraying machine is driven by single diesel, electronic control, easy operation, especially suitable for outdoor conditions, **applicable to all kinds of rock slope, hard soil, poor soil, acidic soil, arid zones, clay soil and coastal dam, etc.**

Feature:

1. The material of main structure is made of high quality structural steel. No matter how worse the conditions are, it ensures seeder sturdy and solid. And it has reasonable, generous appearance. Painted with imported painting to guarantee of three-year no fading.
2. Advanced technology, it even works for mud materials which have poor mobility, no blocking, and no stopping, well adaptation of various materials, big output pressure.
3. Two mixing models, blades mixing and circular spray, are powerful enough to ensure the spraying mixture in the planting process is in fully suspended and fully mixed stated, evenly emitting the mixture of raw materials at one time.
4. It has strong power, the maximum head can be above 60m, and be equipped with many types of spraying guns, which extend the maximum operation scope from 200m to 300m; fan-shaped spray nozzle or mist spraying is more suitable for close distance planting to meet various requirements.
5. This machine has wide usage, not only can be applied in spraying planting for rice, grass, tress, flowers, seeds, and other crops, but also in irrigation, fertilize, pesticide spraying and other daily care, soil improvement work. This machine can also mix different materials like seeds, fertilizer, soil conditioner, seed adhesives, moisturizer, straw, fiber covering materials, yellow soil, red soil, sandy soil and clay, evenly emitting slurry materials with big proportion, high and super concentration.
6. Our hydroseeder can also use as a soil spraying machine.

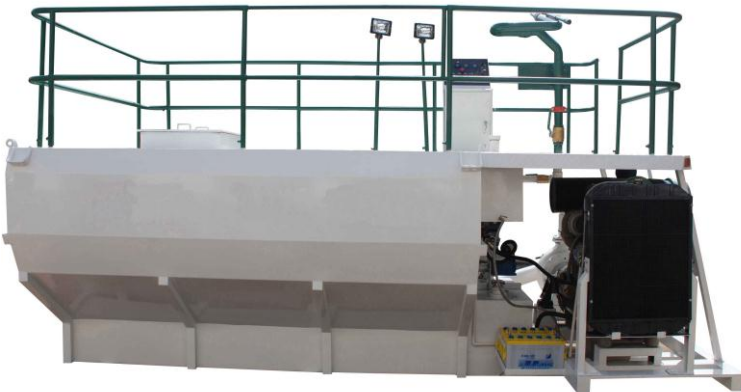
Technical Sheet

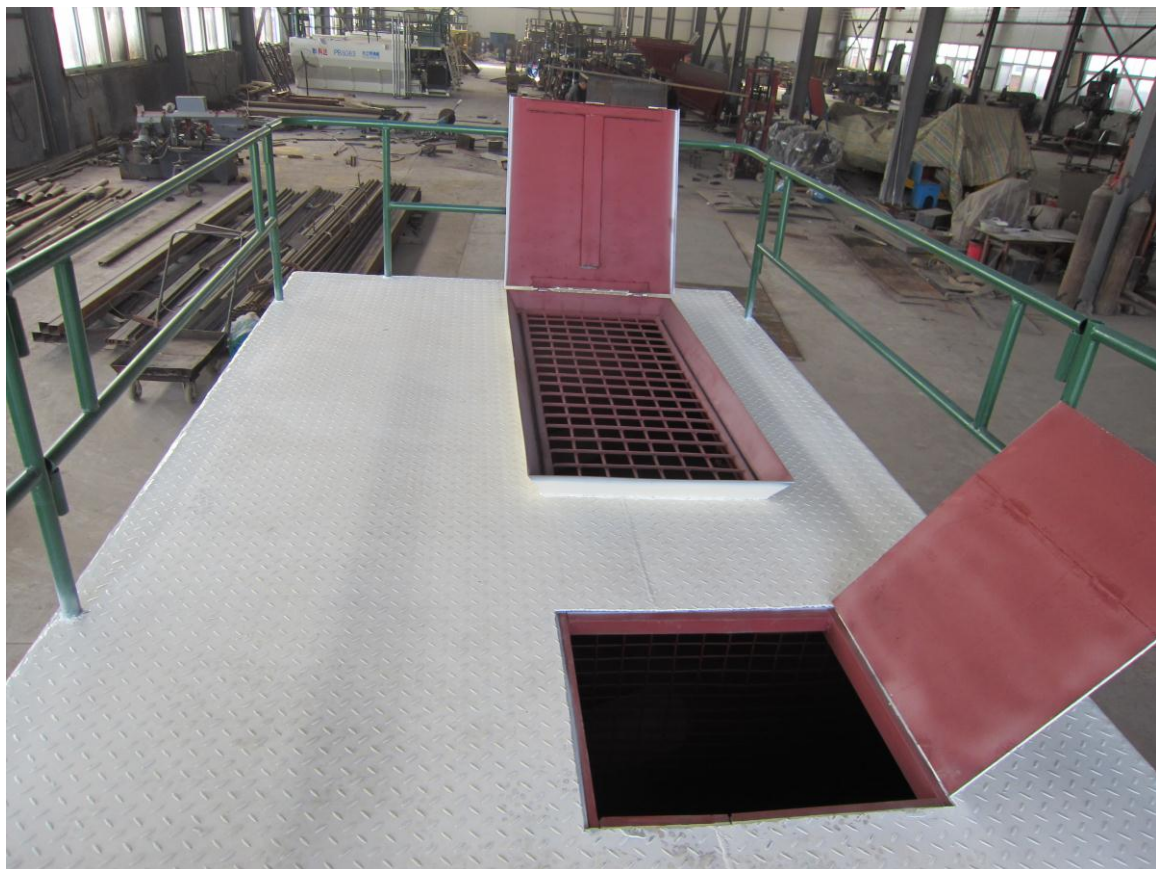
Model	PB4083	PB6083	PB8083
Diesel engine	LRC4108T	LR4A3Z	LR4A3Z
Power	63kw	83kw	83kw
Tank capacity	4m ³	6m ³	8m ³
Output	1350L/min		
Output pressure	8kgf/cm ²		
Max. solid Content	Volume ratio 30%, weight ratio 60%		
Max. aggregate	20mm		
Mixing mode	Hydraulic infinitely variable, blades mixing and circular jet mixing		
Rotating speed of mixer shaft	0-110rpm		
Max. horizontal conveying distance	38-45m with gun 100-120m with hose		
Max. vertical conveying distance	40m with gun 80m with hose		
Spraying guns type	Fixed standing gun and pipe gun		
Height of fence (mm)	800		
Net weight (kg)	2650	3200	
Dimension (mm)	4600*2200*2400		5500*2200*2500

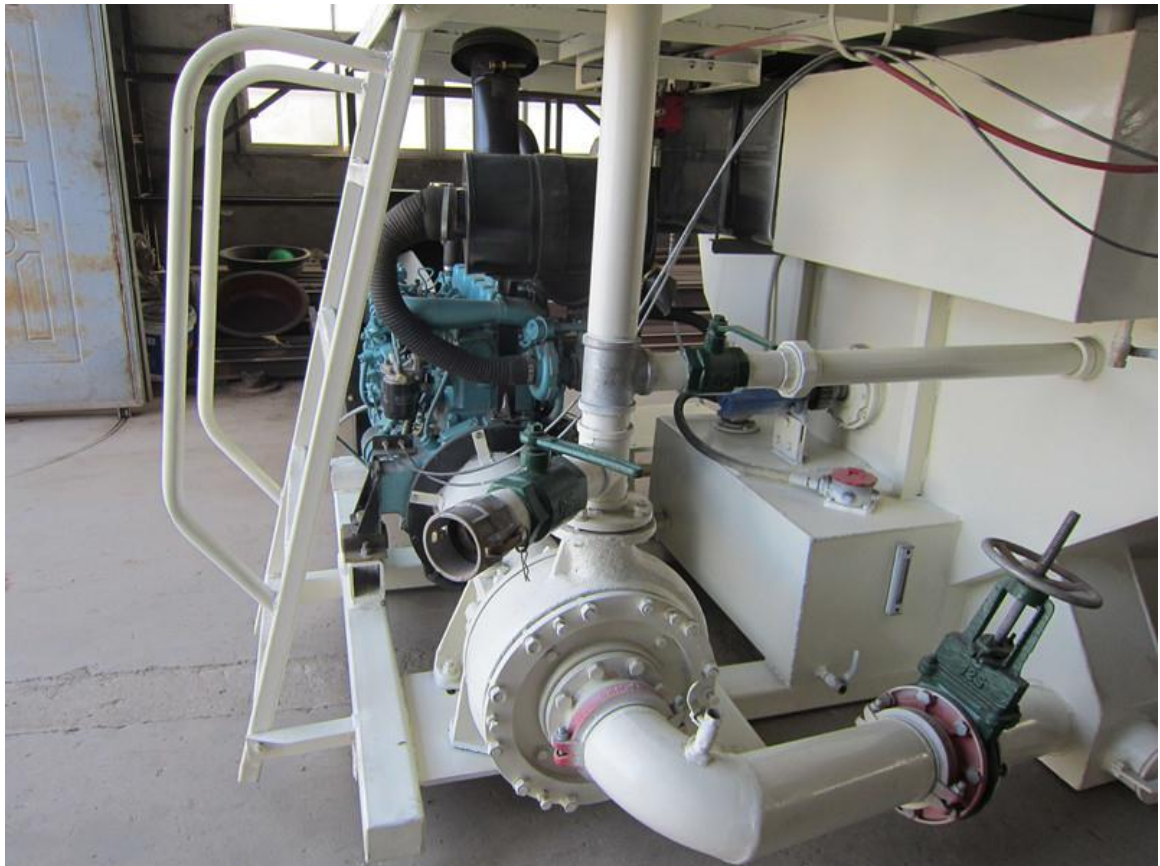
Date sheet of our diesel engine:

Model	LR4A3Z
Type of diesel engine	Turbo diesel engine, water-cool
Cylinder No.	4 pieces
Cylinder dia. × Piston stroke(mm)	105 × 125
Capacity(L)	4.33
Rated power/rotating speed(kw/r/min)	83/2400
Max. torque point rotating speed(r/min)	1600-1800
Torque reserve	22-25%
Fuel consumption rate of Declared working condition(g/kw · h)	≤245
Fuel consumption rate of Max.torque working condition(g/kw · h)	≤242
Oil consumption rate of Declared working condition (g/kw · h)	≤1.63
Idle speed(r/min)	1000 ± 30
Cold starting performance	-10° C can start easily(without any assist)
High altitude(m)	≤2200
Ambient temperature of diesel engine working	-10° C~40° C
Direction of turning of diesel engine	Anticlockwise(facing power output side)
Net weight(kg)	430

Pictures









Test the Hydroseeder:



Delivery the Hydroseeder:

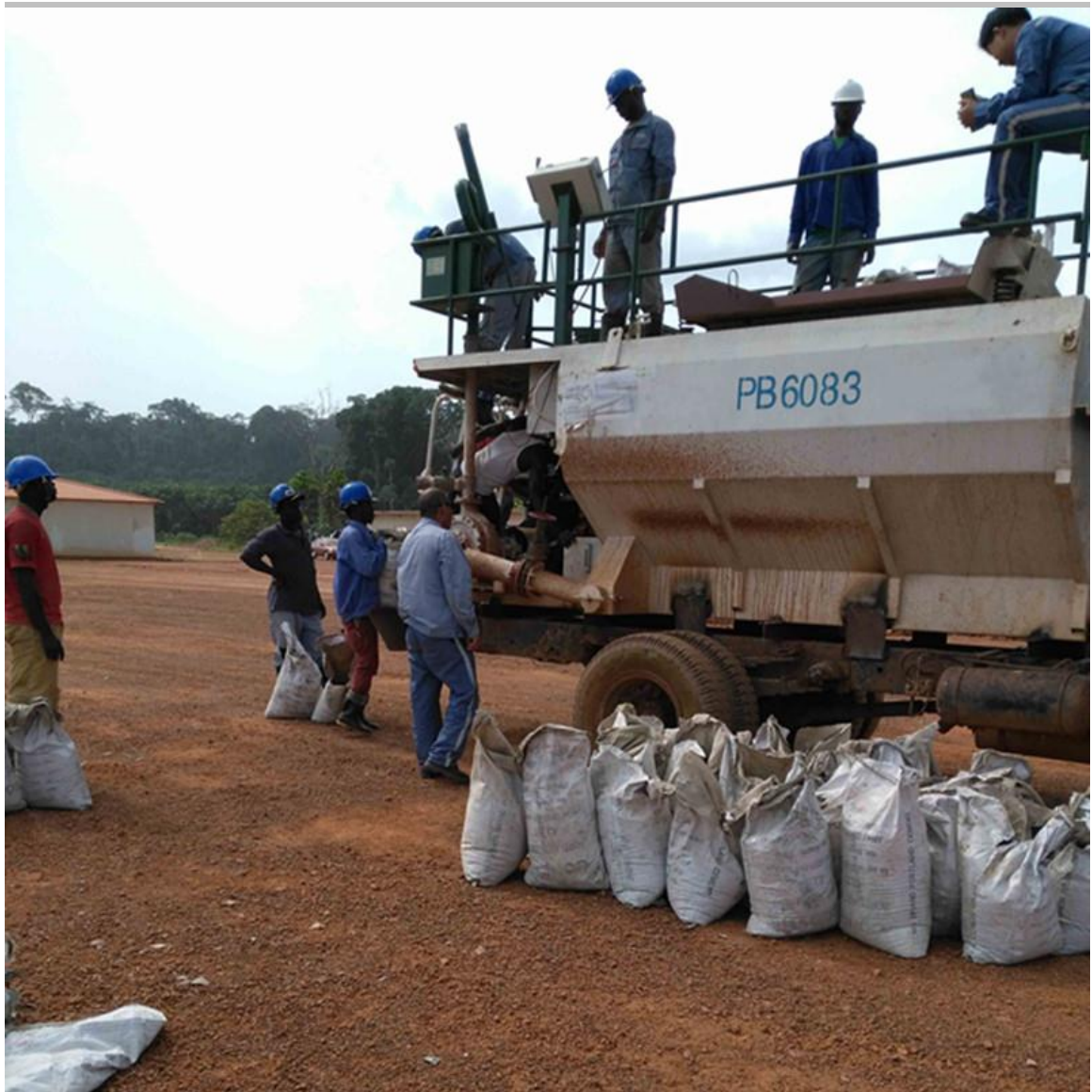


Application of Hydroseeder:



Our Hydroseeder work in South Africa:







郑州佰利得机器制造有限公司

Zhengzhou Lead Equipment Co., Ltd.

Xisihuan Ring-road East , Tielu Village, Xushui Town, Zhongyuan,
Zhengzhou, Henan, China (Mainland)

P.C. 450053

Tel: +86-371-63902781

Fax: + 86-371-63526676

Skype: machine.machine6

Email:sales@leadcrete.com

Website: www.leadcrete.com