

MAT250/350/60HD Hydraulic Grout Station/Plant

Description

MAT250/350/60HD Grout Station is a hydraulic driven combination of mixer, agitator and grout pump, it is specially design for continuous cement mixing and grouting in ground/underground engineering. It can fast mix water, cement and additive, then the mixed slurry can be stored into a 300 liters agitator, thus the mixing work can continuously be done.

Feature

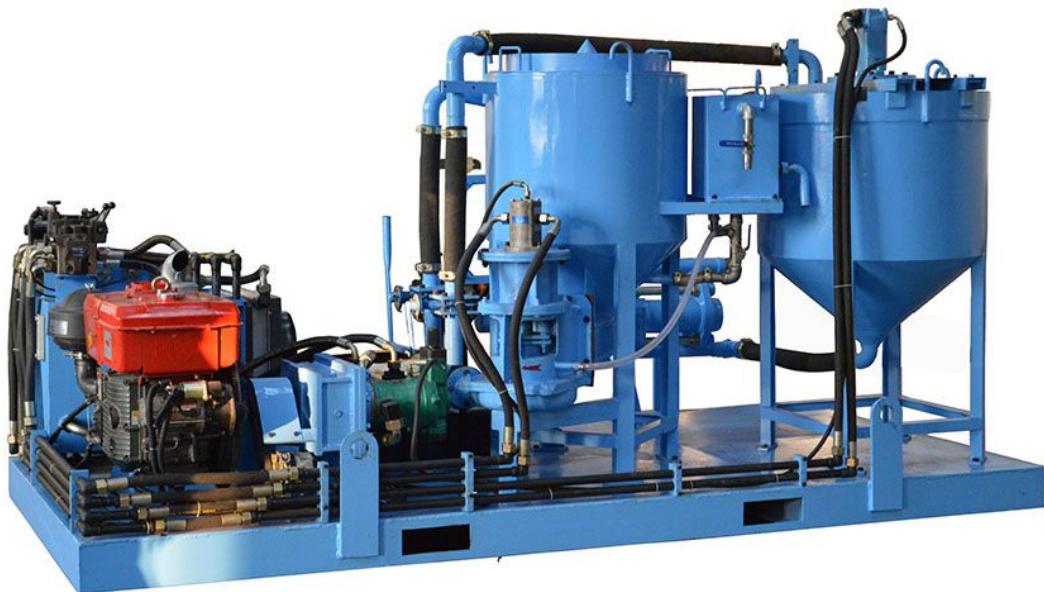
1. Compact size, It is combination of mixer, agitator and piston grout pump in one base frame;
2. Yuken relief valve and directional valve for hydraulic system of grout pump;
3. Butterfly valve of mixer and agitator;
4. Oil temperature gauge can automatically control cooler fan working in normal temperature range, if temperature is too high, the machine will stop work automatically;
5. Operation and maintenance are simple;
6. With ISO, CE certificate.

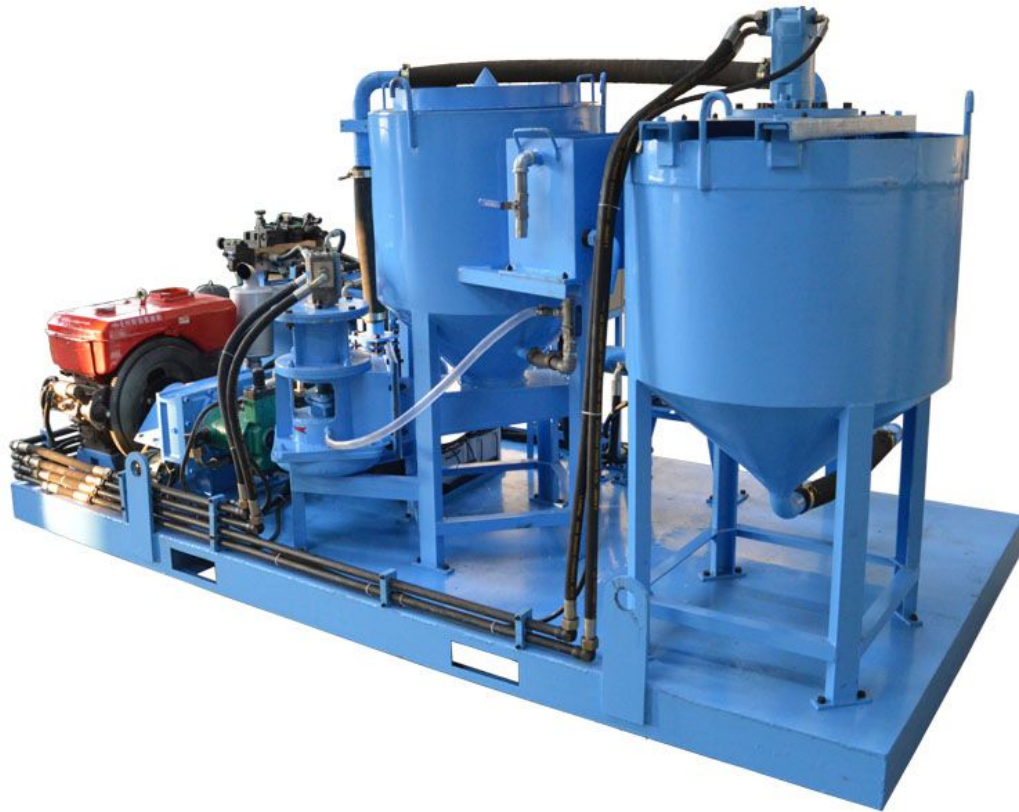


Technical data

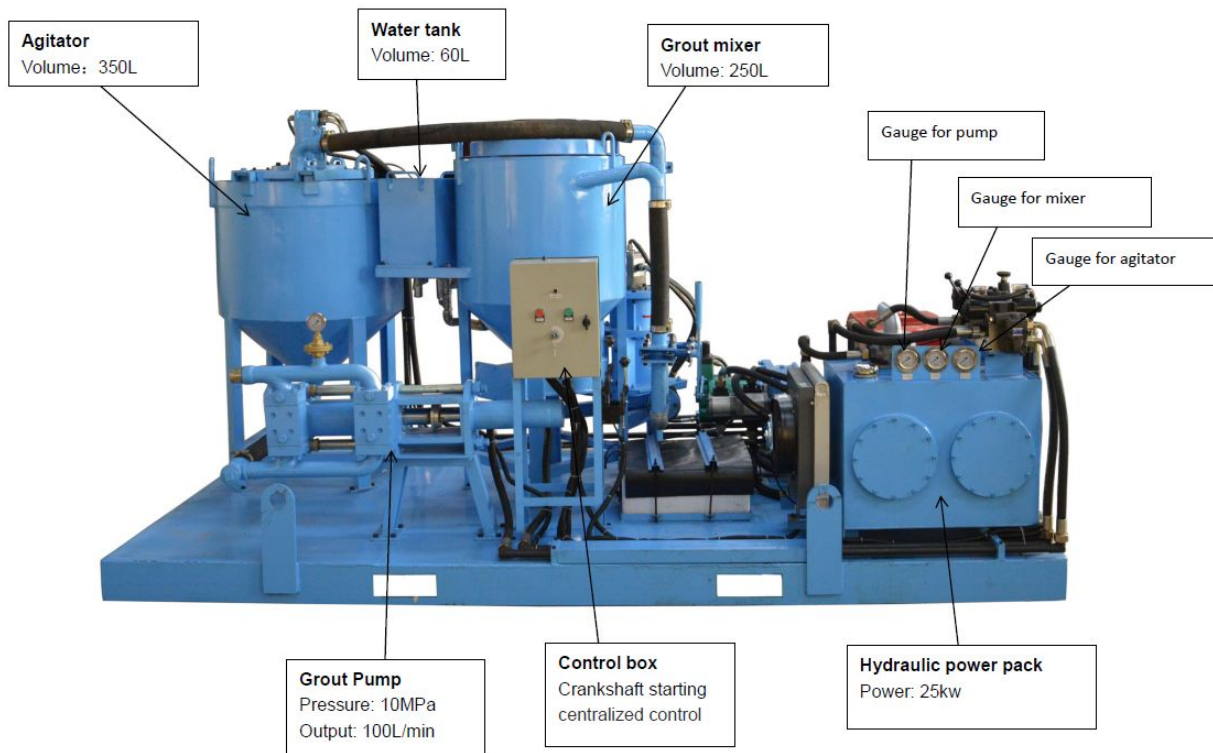
| Description | Data |
|---|---------------------|
| Grout Station type | MAT250/350/60HD |
| Mixer Volume | 250L |
| Mixer production(w/c ratio=1) | 4 m ³ /h |
| Circulation capacity | 1200l/min |
| Suitable W/C Ratio | 0.5 to 1 |
| Agitator Volume | 350L |
| Agitator Speed | 36rpm |
| Water tank | 60L |
| Grout Pump Type | LGH90 |
| Grout pump output(Max.) | 100L |
| Grout pump work pressure | 10MPa |
| Grout Station Overall dimension | 3300x1650x1500mm |
| Grout Station Weight | 1400kgs |
| Note:MAT250/350/60HD is a combination of mixer, agitator and grout pump in one base frame | |

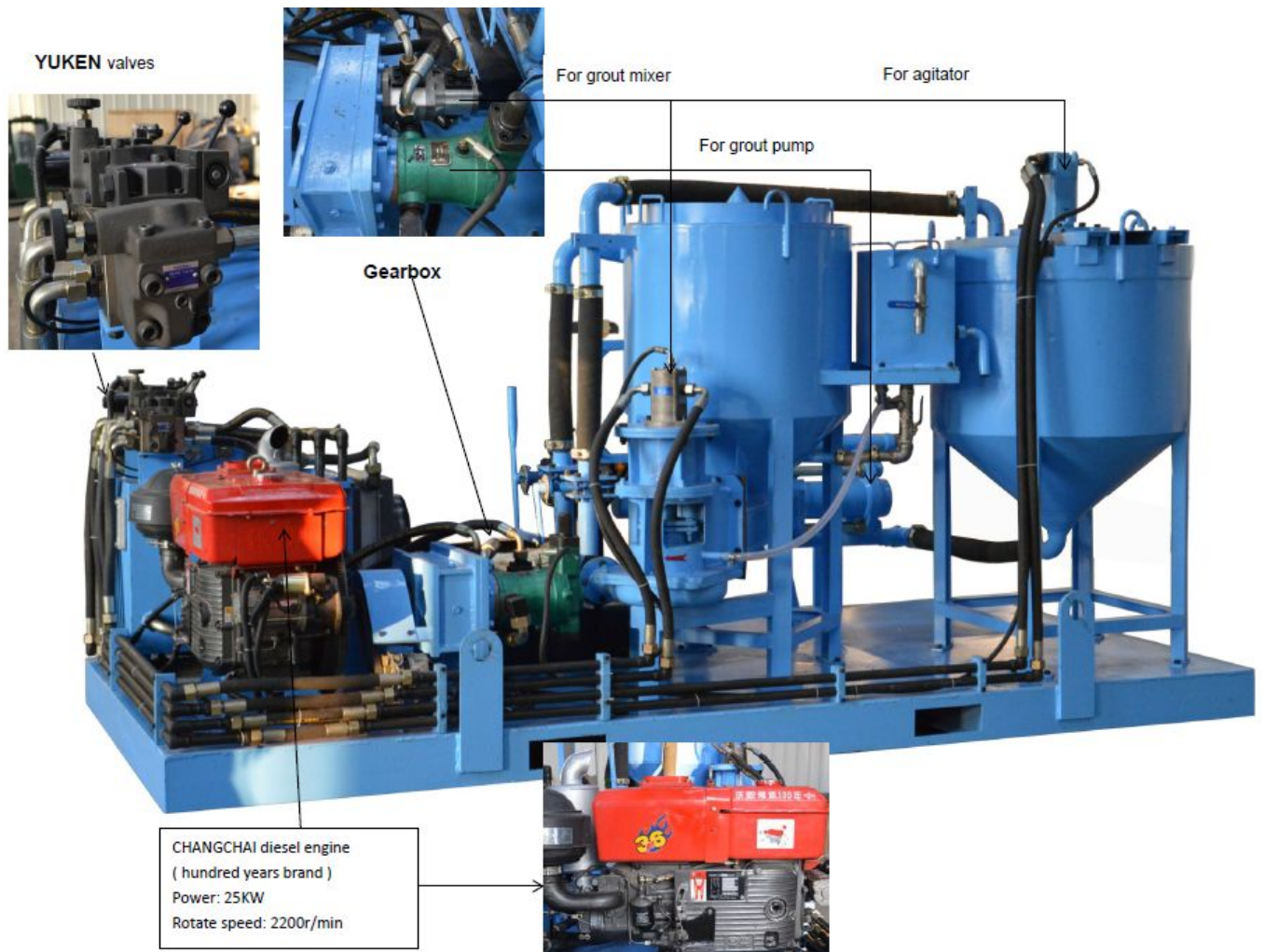
Pictures in different angles:





Detailed parts





郑州佰利得机器制造有限公司

Lead Equipment Co.,Ltd.

Phone: +86-371-63902781

Mobile phone:+86-18638162745

Email: sales@leadcrete.com

Web: www.leadcrete.com