

## LGP800/1200/200PI-D Grout Station



### **Description**

LGP800/1200/200PI D grout station is a combination of mixer, agitator and grout pump in one plant. It is mainly used in highway, railway, hydropower, construction, mining and other ground and underground construction.

High speed vortex mixer ensures mix quickly and evenly. Water, cement or bentonite is quickly mixed into a homogeneous slurry. Then the mixed slurry was delivered to the agitator. Grout pump injects from the mixing drum (storage tank). This ensures a continuous mixing and grouting operations. The grouting plant is full hydraulic drive with diesel engine. Grouting pressure and displacement is step-less adjustable. Compact size and it is easy to operate. It also takes up a small space.

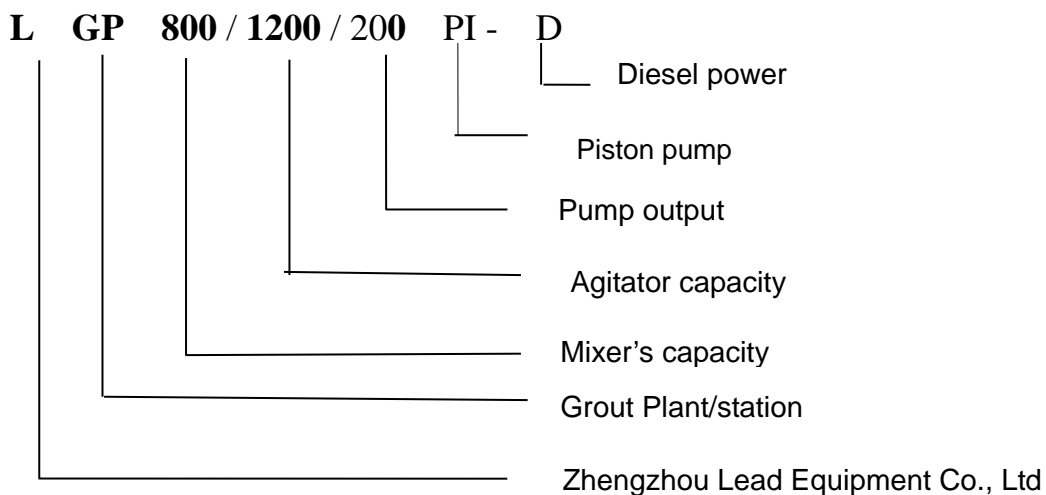
**Feature**

- 55KW air cooling diesel engine as the power, it is suitable for field construction
- Pump output is 0-200L/min. Pump pressure is 0-5Mpa. All step-less adjustable.
- Simple structure, light weight, easy maintenance
- Double-cylinder and single-acting grouting pump: grouting continuous and pulse small.
- The latest improvement design of valve chamber: It is quickly convenient cleaning.
- Grouting pump outlet is equipped with buffer. This can further reduce the grouting pressure fluctuations.
- Delivery with special tools. This can ensure change the pistons rapidly, reduce the time of replacing.
- Less spare parts ensure low maintenance costs
- High speed vortex mixer ensures mix quickly and evenly.
- Mixer and agitator switch by using squeeze handle, it is safe, reliable and easy to operate
- Mixer and agitator use Stainless steel material.

**Applications:**

- **Civil engineering** - dam, tunnel, subway, mine, soil nailing wall, curtain, anchor, cable trench and anchor grouting;
- **Building structure** - building and bridge repair, foundation reinforcement, slope support, soil compaction, rock grouting;
- **Engineering** - underwater foundation, offshore platform, coast foundation grouting reinforcement
- **Mine application** - roadway reinforcement, backfill, waterproof grouting.
- Acted as a grouting plant in the Pipe Jacking Machine

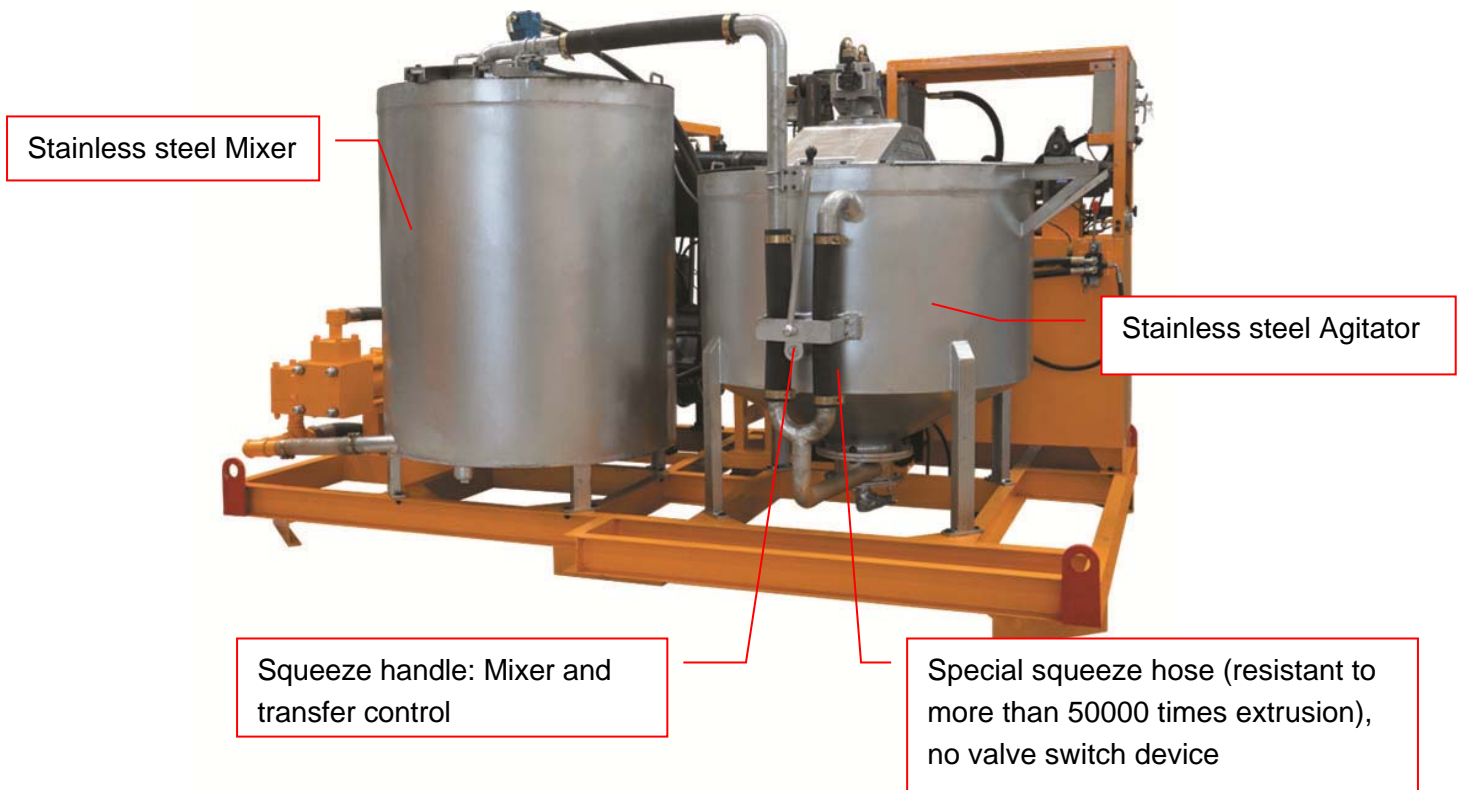
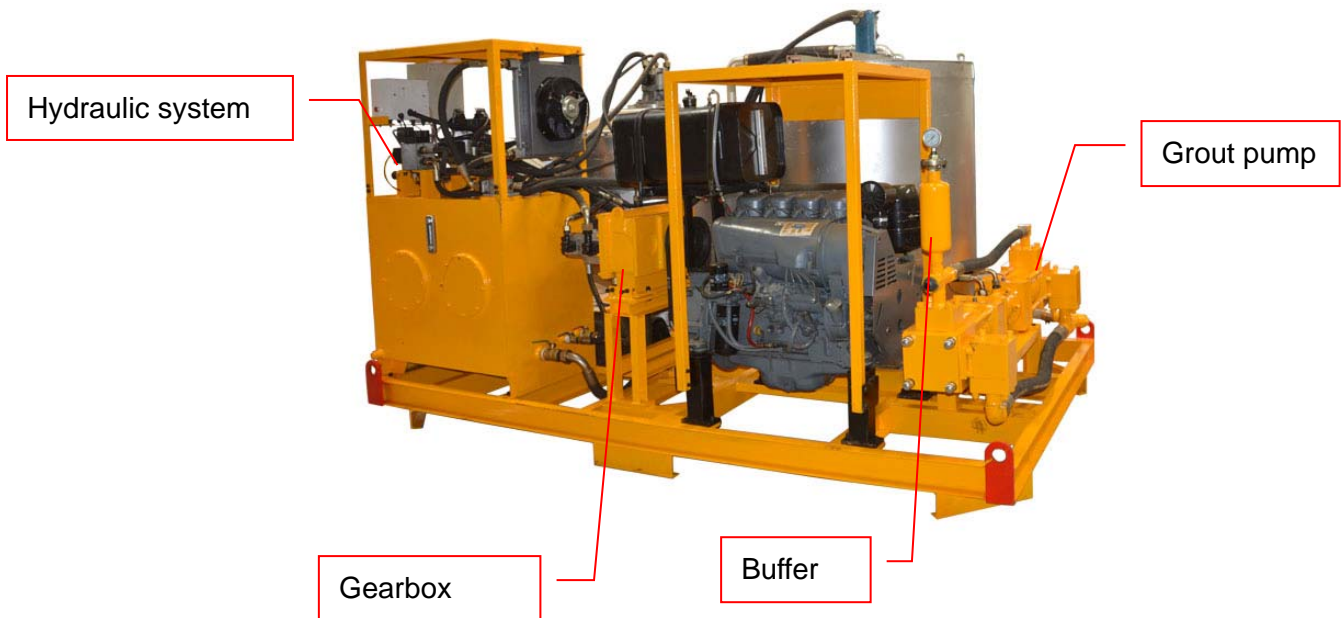
**Model Definition**



**Specification:**

<b>Description</b>	<b>Data</b>
Grout Station model	LGP800/1200/200PI-D
Diesel engine (Air cooling, Deutz technology)	55kw, 2500r/min
Dimensions	3200*2200*2000mm
Weight	2460kg
<b>Mixer</b>	
Capacity	800L
Output	15m <sup>3</sup> /h
Suitable water/cement ratio	≥0.5:1
Motor model	CMZ2040
Rated Rev.	1500rpm
<b>Agitator</b>	
Capacity	1200L
Motor model	2w-400
Rated Rev.	54rpm
<b>Pump</b>	
Output	0-200L/min
Pressure	0-5MPa

**Pictures:**





Grout pump: START

Cooling knob

Grout pump: OFF

Diesel engine start/stop switch: Turn right to start, diesel engine will start.

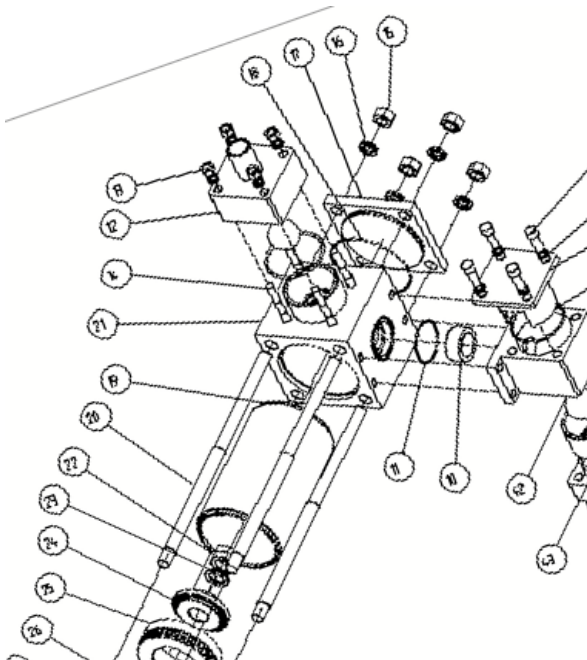
Manual directional control valve of Mixer



Deutz technology: Powerful air cooling diesel engine

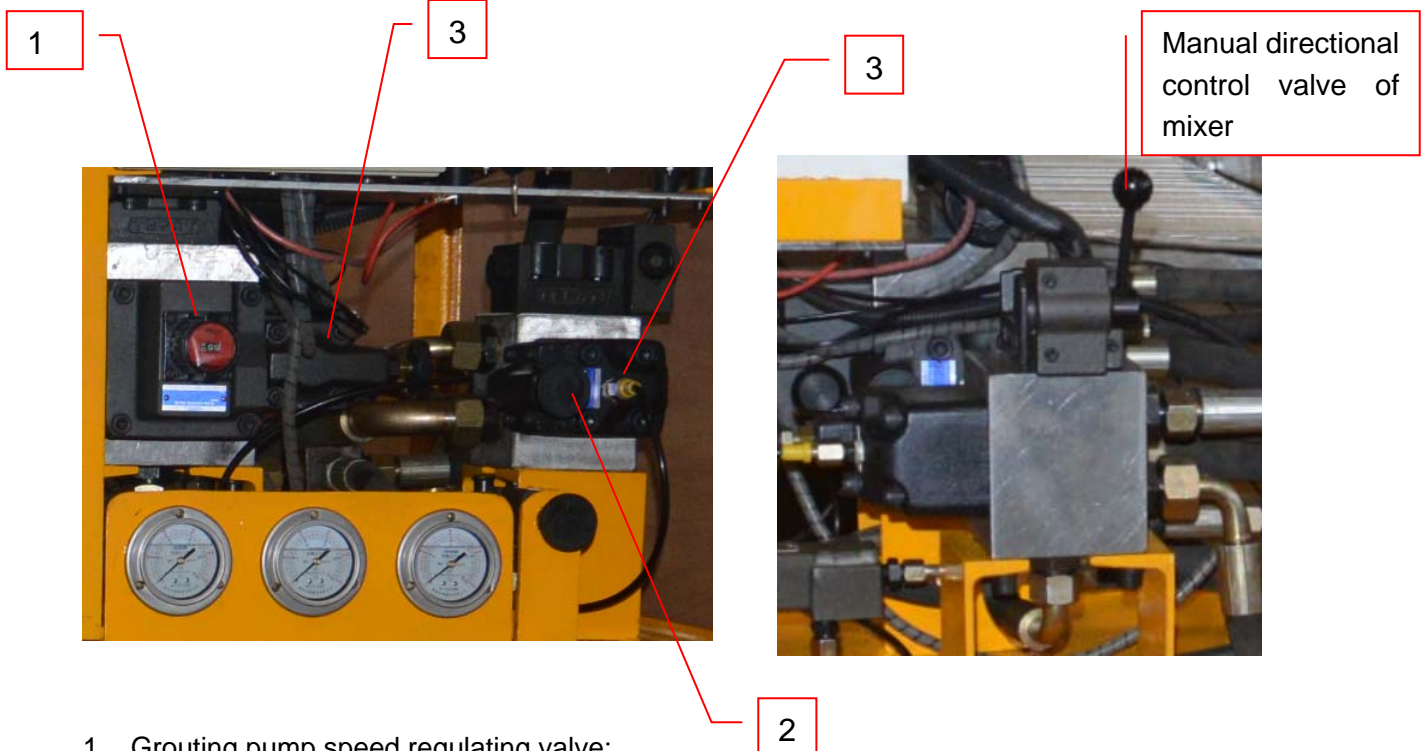


Newest design and easy  
cleaning chamber



Newest design and easy  
to change the piston





1. Grouting pump speed regulating valve:

Clockwise rotation: grouting pump capacity increase;

Counterclockwise: grouting pump capacity decreases

2. Pressure regulator:

Clockwise rotation: grouting pump pressure increase;

Counterclockwise rotation: grouting pump pressure decreases

3. Overflow valve:

The overflow valve is used to prevent hydraulic system overload and protect oil pump etc.

## Zhengzhou Lead Equipment Co., Ltd.

Add: No. 30<sup>th</sup>, Tashan south road, Xingyang, Zhengzhou, Henan, China

Post code: 450000

Tel: 0371-63902781/55019537/55019594

Fax: 0371-63526676

Email: sales@leadcrete.com

Web: www.leadcrete.com