

Mini Masonry concrete pump

Description

LMP7/35 is a concrete & grout pump designed for masonry grouting and shotcrete applications. It features up to 7.5 cubic meters per hour production output. This product is a new, multi-purpose, multi-purpose industrial pump developed by absorbing advanced technology from abroad. Typical applications include: masonry block filling, wall grouting, hoisting mortar for masonry wall construction; concrete sidewalk and patio slab pumping; low-volume shotcrete.

LMP7/35 MINI Masonry Concrete Pump



Features:

- 7.5 m3 per Hour
- Production Rate
- S tube valve
- Self-Propelled
- Equipped Wireless Remote
- Electric Powered Version

Technical parameters:

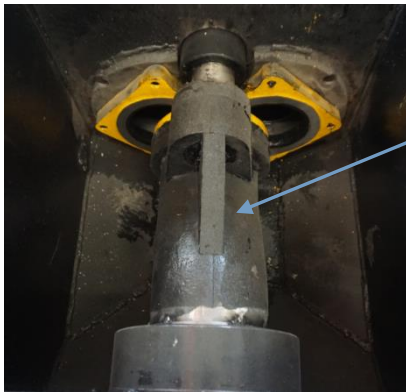
Name	Mini Masonry concrete pump
Model	LMP7/35
Output	7.5m ³ /h
Pumping Pressure	35bar
Max. Aggregate Size	15mm
Cylinder diameter	∅120mm
Cylinder Stroke	360mm
Conveying Hose Inner Diameter	∅80mm
Main Motor Power	15Kw
Max. Vertical Conveying Distance	30m
Max. Horizontal Conveying Distance	90m
Overall Dimension	1950*700*1130mm
Weight	750kg
Note: the machine can be equipped with electric walking device according to customer demands.	



**Cemented Carbide Wear Plate/Ring
(more than 10000 m2)**



Swing tube valve



Solid Tyre



Automatic lubricating oil



Air cooling system

Mini Masonry Concrete Pump Benefits



Polyether material piston



The foot brake



The electric switch



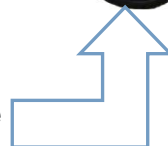
**Self-Propelled
Electric walking device**



Hard chrome cylinder



LMP7/35 mini masonry concrete pump is the most durable, compact, efficient and versatile swing-tube engineered concrete grout pump available on the market today.





Application:

- Concrete/bridge repair
- Machine base stabilization
- Masonry block fill
- Mining
- Piling encasements
- Pressure grouting
- Refractory
- Shotcrete
- Slabjack/mudjack lifting
- Soil stabilization
- Void fill

A complete set of LMP7/35 Mini concrete pump



NO.	Description	Qty.	Unit
1	Main machine	1	set
2	Convey hose ϕ 80*10m	1	pc
3	Reducer pipe ϕ 100- ϕ 80	1	pc
4	Steel pipe ϕ 80	1	pc
5	Elbow pipe ϕ 80	1	pc
6	Discharge pipe	1	pc
7	Clamp ϕ 100	1	pc
8	Clamp ϕ 80	2	pc